

ADDENDUM NUMBER TWO
COLLEGE AVE. WATERLINE REPLACEMENT
PEMBERVILLE, OHIO
PROJECT NO. 10E08931
October 25, 2019

BID OPENING: Wednesday October 30, 2019 at 1:00 PM local time at the Pemberville Village Hall, 115 Main Street, Pemberville, OH 43450.

PLAN SET

SHEET 2

In the "WATER SUPPLY PIPE" section, change the last line of the third paragraph to read:

"All fittings shall be made in the U.S. except for the 5-5/8 degree bends."

In the "INSTALLATION" section, change the first line of the first paragraph to read:

"The pipe shall be laid on a properly shaped and firm granular bedding meeting requirements of ODOT item 703.11, Type 1 (304) or ODOT #57."

In the "BACKFILLING" section, change the third sentence of the first paragraph to read:

"Trenches outside the limits of five (5) feet from the back of curb or edge of pavement shall be bedded with thoroughly tamped granular material a minimum of six (6) inches above the top of the pipe."

SHEET 4

The "TYPICAL TRENCH & BEDDING DETAIL" shall be revised per the attached detail to allow the use of ODOT #57 stone for pipe bedding.

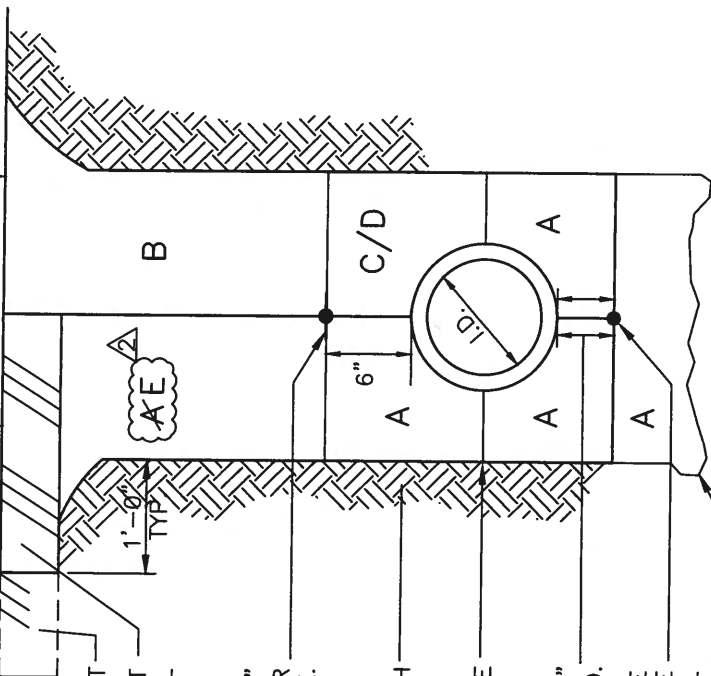
END OF ADDENDUM #2

P:/Projects/10E08931/Project Specs/ADDENDUM NUMBER 2 - Pemberville College Ave Waterline Replacement_10.25.2019
FINAL.wpd

UNDER AND WITHIN (5) FT. OF
EXISTING OR PROPOSED PAVEMENT,
ROADS, DRIVES, WALKS, &
STRUCTURES.
SAW CUT ALL JOINTS

NOT UNDER NOR WITHIN (5) FT. OF
EXISTING OR PROPOSED PAVEMENT,
ROADS, DRIVES, WALKS, & STRUCTURES.

EXISTING PAVEMENT
SEE PAVEMENT
REPLACEMENT DETAIL



INSTALL CONTINUOUS "CAUTION"
TAPE AS REQUIRED BY OWNER
ABOVE ALL PIPE.

UNDISTURBED EARTH
SPRINGLINE

THE GREATER OF 6"
OR 0.25 x I.D.

INSTALL CONTINUOUS WIRE
BELOW ALL NON-METALLIC PIPE
AND EXTEND TO TOP OF ALL
VALVE BOXES.

REPLACE ALL
OVER-EXCAVATED MATERIAL AT
CONTRACTOR'S EXPENSE.

LEGEND:

- A - USE GRANULAR BEDDING MATERIAL ODOT #57 STONE OR ODOT 703.11, TYPE 1 (GRADATION 304) OR OTHER ENGINEER APPROVED GRANULAR MATERIAL COMPACTED IN 6" LIFTS IN ACCORDANCE WITH ODOT 304.05.
- B - USE APPROVED, SELECT, EXCAVATED MATERIAL COMPACTED IN 6" LIFTS.
- C - USE GRANULAR BEDDING WITH PLASTIC AND FRP PIPE.
- D - USE ENGINEER APPROVED, SELECT, EXCAVATED MATERIAL WITH RIGID PIPE.
- E - USE GRANULAR BACKFILL MATERIAL ODOT 703.11, TYPE 1 (GRADATION 304) COMPACTED IN 6" LIFTS IN ACCORDANCE WITH ODOT 304.05.

NOMINAL PIPE I.D. (IN.)	MAX. TRENCH WIDTH AT TOP OF PIPE (IN.)
UP THRU 24	O.D. + 24
OVER 24 THRU 66	O.D. + 30
72 AND LARGER	O.D. + 48

CONTROLLING NOTES:

- 1 - NO BEDDING USED FOR METAL PIPE, SHALL CONTAIN SLAG.
- 2 - UNLESS OTHERWISE NOTED, THE COSTS FOR EXCAVATION, BEDDING, BACKFILL, AND COMPACTION SHALL BE INCLUDED IN THE COST OF THE PIPE.
- 3 - WHEN INSTALLING PIPE IN OR ABOVE ROCK, THE MINIMUM BEDDING UNDER THE PIPE SHALL BE 6".
- 4 - MINIMUM COVER OVER PIPE SHALL BE 4'-6" UNLESS OTHERWISE NOTED OR SPECIFIED.

TYPICAL TRENCH & BEDDING DETAIL

N.T.S.